

# Additional Cooperative Information

- Average Retail Rate
  - Distributed Generation
  - Sample Metering
-

WILD RICE ELECTRIC COOPERATIVE, INC.  
 SCHEDULE C  
 AVERAGE RETAIL UTILITY RATES 2016

| SERVICE TYPE                       | <u>KWH<br/>CHARGE</u> | <u>BASE<br/>CHARGE</u> | <u>TOTAL<br/>CHARGE</u> | <u>KWHRS</u> | <u>AVERAGE RETAIL<br/>RATE PER KWH</u> |
|------------------------------------|-----------------------|------------------------|-------------------------|--------------|--|
| FARM AND HOME SERVICE              | 12,782,274            | 3,531,236              | 16,313,510              | 112,072,290  | 0.11405                                |
| VILLAGE & RESIDENTIAL SERVICE      | 3,329,356             | 1,284,013              | 4,613,369               | 28,035,625   | 0.11875                                |
| COMMERCIAL AND SMALL POWER SERVICE | 1,927,485             | 443,828                | 2,371,313               | 20,080,989   | 0.09599                                |
| LARGE POWER SERVICE                | 2,489,200             | 220,039                | 2,709,239               | 28,552,735   | 0.08718                                |
| INDUSTRIAL POWER SERVICE           | 243,198               | 25,154                 | 268,352                 | 3,415,000    | 0.07121                                |
| FARM & HOME OFF PEAK HEATING       | 3,491,049             | -                      | 3,491,049               | 57,085,335   | 0.06115                                |
| STREET LIGHTING                    | 56,085                | -                      | 56,085                  | 477,382      | 0.11749                                |
| TOTAL                              | 24,318,647            | 5,504,270              | 29,822,917              | 249,719,356  | 0.09738                                |

## Distributed Generation

### A. Qualifications:

1. Customers must meet the following criteria:
  - a. Generation must be connected synchronously to Minnkota's transmission system and/or Wild Rice Electric's distribution system.
  - b. Annually perform a test of the generation at maximum output.
  - c. Generator(s) must be capable of operating a minimum of four consecutive hours and a minimum of five annual events.
  - d. Provide Minnkota and/or Wild Rice Electric with generation performance data, upon request.
  - e. Maintain generator(s) in a condition that meets good utility practice.
  - f. Minnkota and/or Wild Rice Electric retain the right to dispatch the generator(s) as needed.
  - g. Enter into a contractual agreement with the Wild Rice Electric and/or Minnkota.
2. Wild Rice Electric must allow the customer and Minnkota to utilize its distribution facilities to facilitate the transfer of power from the generator(s) to and from Minnkota.

### B. Rate Schedule:

1. Capacity:
  - a. Generator(s) not supplying their load needs – Minnkota will pay the customer \$21.00 per kW per year for MISO accredited generation if the individual generator capacity is 500 kW or larger.
  - b. Generator(s) supplying their load needs – Minnkota will pay the customer \$21.00 per kW per year for MISO accredited generation that is in excess of 115% of the customer's one-hour kW peak load if the individual generator excess capacity is 500 kW or larger

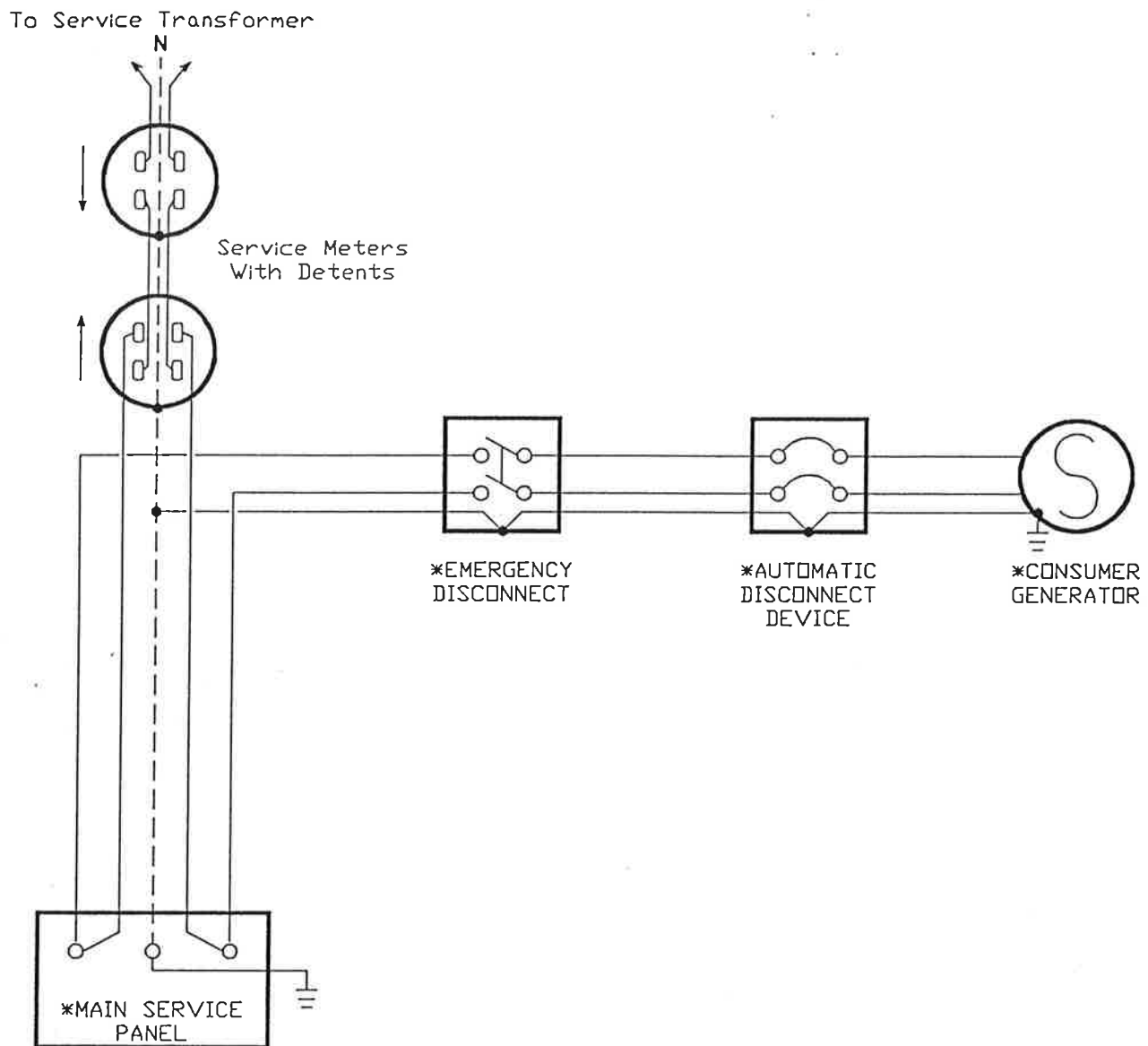
2. Energy: Minnkota will pay the customer for all net kWh generated. The distributed generation energy rate is Minnkota's avoided cost which is currently based on the wholesale energy market conditions.

Adjustments to the distributed generation rate may be done on a case-by-case basis depending on the value the energy provides Minnkota. The criteria considered include but are not inclusive to: the ability/limits to dispatch the generator(s), on-peak kWh production versus off-peak kWh production, the generator(s) capacity factor, Minnkota's need for capacity and energy, etc.

Distributed Generation Energy Rate: \$0.025 per kWh

3. The distributed generation capacity and energy rate is reviewed annually and is subject to change on an annual basis.

SAMPLE METERING ARRANGEMENTS

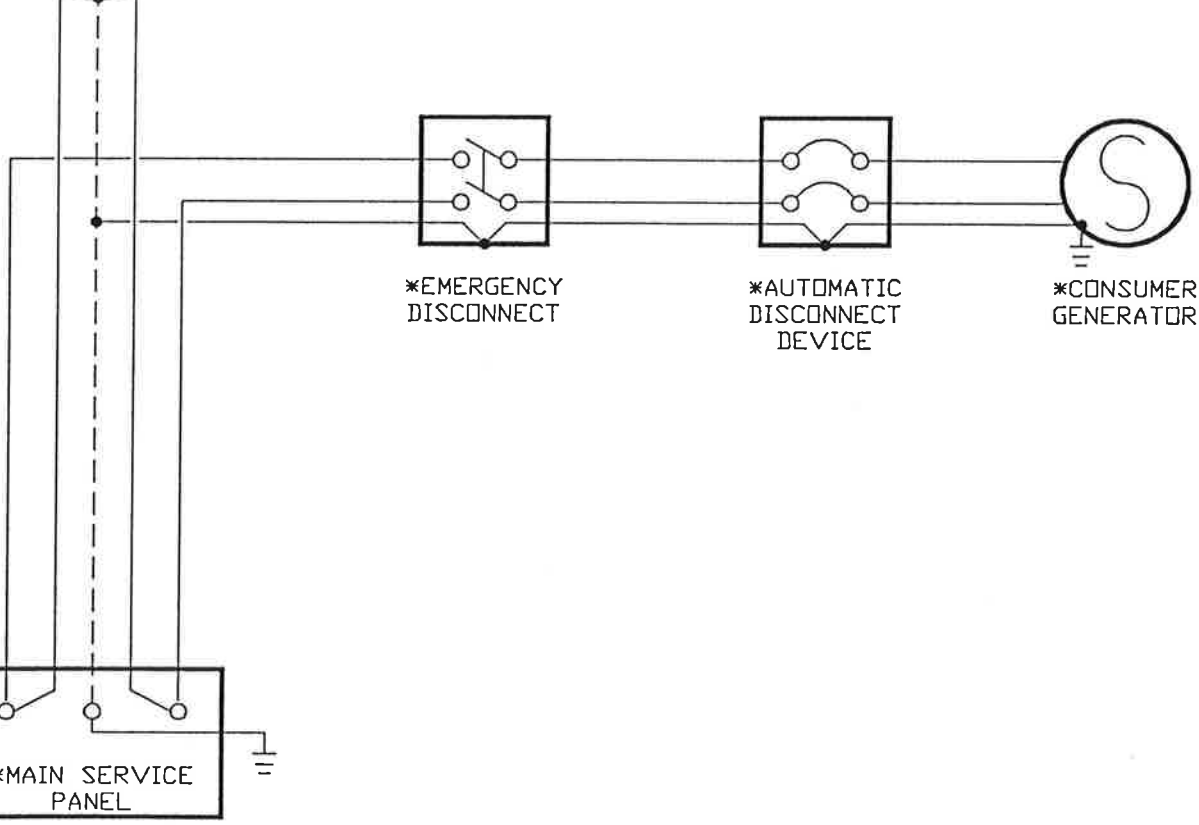
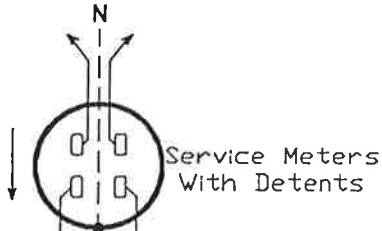


\* Consumer owned subject to Cooperative's Rules & Regulations.

For three phase installations all circuit interrupting devices shall have poles for all ungrounded circuit conductors.

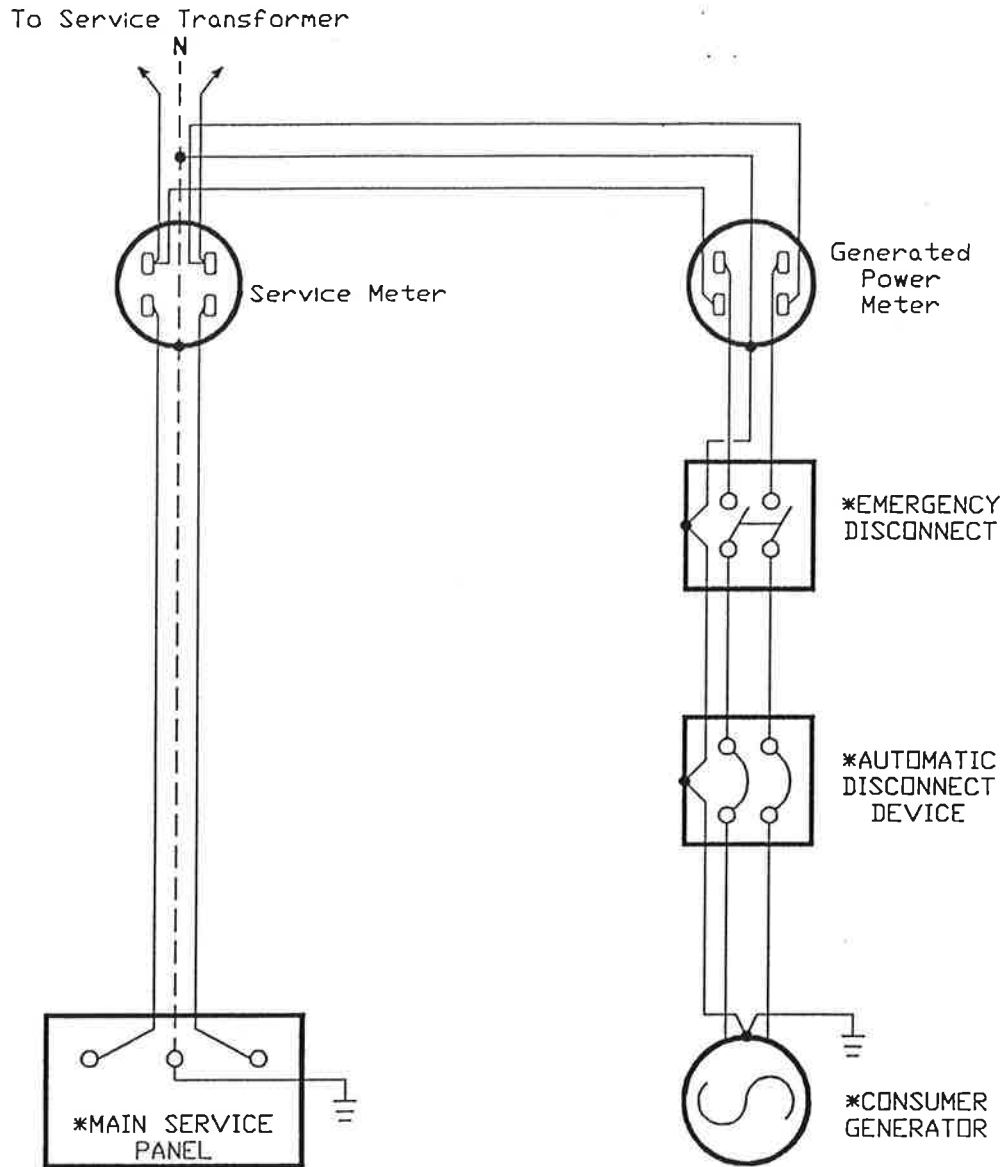
|      |           |          |            |   |                  |
|------|-----------|----------|------------|---|------------------|
|      |           |          | <b>MPC</b> | <b>PARALLEL GENERATION INTERCONNECTION<br/>PURCHASE OF CONSUMER EXCESS GENERATION</b> |                  |
|      |           |          | DRAWN      | MINNKOTA POWER COOPERATIVE INC.   |                  |
|      |           |          | DATE       | GRAND FORK, NORTH DAKOTA  |                  |
| DATE | REVISIONS | APPROVED | APPENDIX F | PAGE 1 OF 3   | DWG. NO. G100001 |

To Service Transformer



\* Consumer owned subject to Cooperative's Rules & Regulations.  
 For three phase installations all circuit interrupting devices shall have poles for all ungrounded circuit conductors.

|      |           |            |            |   |                  |
|------|-----------|------------|------------|---|------------------|
|      |           | <b>MPC</b> |            | <b>PARALLEL GENERATION INTERCONNECTION<br/>NO PURCHASE OF CONSUMER GENERATION</b> |                  |
|      |           | DRAWN      |            | MINNKOTA POWER COOPERATIVE INC.<br>GRAND FORK, NORTH DAKOTA                       |                  |
|      |           | DATE       |            | PAGE 2 OF 3   |                  |
| DATE | REVISIONS | APPROVED   | APPENDIX F |   | DWG. NO. G100002 |



\* Consumer owned subject to Cooperative's Rules & Regulations.  
 For three phase installations all circuit interrupting devices shall have poles for all ungrounded circuit conductors.

|      |           |          |            |   |                  |
|------|-----------|----------|------------|---|------------------|
|      |           |          | <b>MPC</b> | <b>PARALLEL GENERATION INTERCONNECTION<br/>SIMULTANEOUS PURCHASE AND SALE</b> |                  |
|      |           |          | DRAWN      | <small>MINNKOTA POWER COOPERATIVE INC.<br/>GRAND FORKS, NORTH DAKOTA</small>  |                  |
|      |           |          | DATE       |   |                  |
| DATE | REVISIONS | APPROVED | APPENDIX F | PAGE 3 OF 3   | DWG. NO. G100003 |