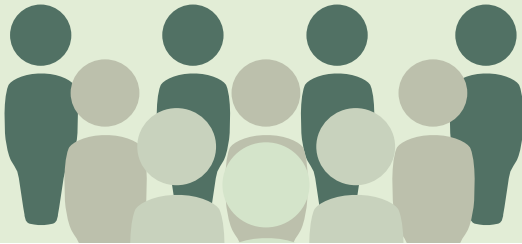


Patronage Capital Credits ...

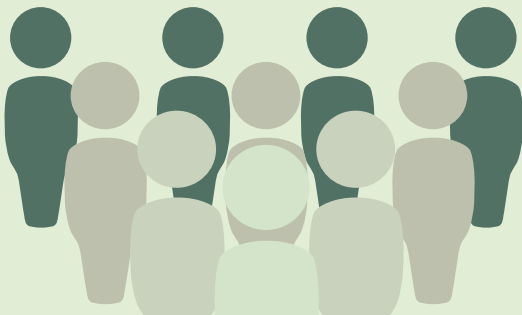
A benefit for being a cooperative member.



The equity of Wild Rice Electric is owned by our members. Members contribute to the equity by paying their bills and generating margins each year.



Margins are annually allocated to each cooperative member.



The equity is returned to members over time through the payment of patronage capital credits.



**WILD RICE
ELECTRIC**
COOPERATIVE INC.

RURAL DELIGHT

February 2018

Volume 78 • Issue 2 • News from Wild Rice Electric Co-op, Inc.,
PO Box 438, Mahnomon, MN 56557 • www.wildriceelectric.com

© NRECA

it Pays to be a Member



Capital Credits

But did you know the rural electric cooperative that sells you your electricity hands its profits back to you?

Rural electric co-ops, like Wild Rice Electric, are nonprofit businesses. They charge you a fair rate for electricity, and use the money to make sure there's enough power to go around. They use it to maintain their equipment, pay their staff and run the business. Anything that's left over is returned to their consumers.

Rural co-op employees don't even refer to that money as "profit" because they know the utility isn't going to keep it. There are no stockholders to pay because co-ops are owned by the people who buy their services, not by investors. Co-op employees call the money left over after all expenses are paid "margins."

You've heard of profit sharing for people who work for employee-minded companies.

They call the refunds they send to their consumers "capital credits" or "patronage dividends."

Getting a capital credits check in the mail, or applied to your account like Wild Rice Electric consumers, is a bonus consumers get for buying their electricity from a cooperative. Another bonus is that those consumers are members – and part-owners – of the co-op, rather than just customers. Capital credits are a benefit of membership.

Next time you pay your electric bill, consider it an investment in a utility that counts you among its owners. Be assured that your co-op, Wild Rice Electric, will put every cent of your payment to good use – and send back what it doesn't need.

Be sure to see if your name is on the un-cashed capital credit check list. You may have money waiting for you! Visit www.wildriceelectric.com and click on the Capital Credits link on the Member Advantages Page or feel free to call our office at 218-935-2517 or 1-800-244-5709.



OVER THE MANAGER'S DESK

AROUND THE CO-OP ...

STEVE HAAVEN, CEO



A New Year

Financial results have been closed and were recently audited for the year of 2017. Preliminary results verify the Cooperative ended the year in good condition, meeting or exceeding covenants required to meet lending covenants as well as financial targets established by the board of directors. The overall financial picture was impacted by an increase in kilowatt hour sales over stagnant growth in sales over the past several years. A major contributor being a return to more normal winter weather conditions causing member usage to increase. On the expense side of the ledger several major wind storms did increase maintenance costs as well as impacted the operations side of the business with member interruption times increasing over recent years.

The 2018 Budget presented to the board of directors does include several items of interest that will impact revenues, expenses and related work activities for the upcoming year. Revenues are expected to trend upward with a return to more normal winter conditions. A positive to the expense side of the picture is the announcement by our wholesale power supplier, Minnkota Power Cooperative, that no increase in wholesale rate costs is anticipated in 2018. Over 70 % of Wild Rice Electric's cost rests in purchasing wholesale power for resale to members. Obviously any adjustment does have an impact. It does appear an adjustment averaging approximately 2.5% to a member using 1,300 kilowatt hours per month may be necessary to offset other distribution related expenses and still meet target ratios. Over the past five years, Wild Rice Electric has basi-

cally passed on increases in wholesale power costs and as a result Wild Rice has counted on growth in sales to cover other distribution related expenses.



System Improvements

A number of major system construction projects completed in 2017 and 2018 will improve service to member-owners as we look to the future. Minnkota Power owns the major transmission lines and related substations delivering electricity generated at power plants. Wild Rice Electric then delivers the electricity from those substations to your homes and businesses over nearly 4,000 miles of distribution lines. Minnkota Power completed mitigation efforts to the Sand Hill, Fosston, Beaulieu and Oakland Substations in October 2017 which will greatly reduce interruptions in those areas. In addition, the Lake Park Transmission Substation was energized on November 15th providing loop feed capabilities to the Lake Park, Cormorant Lake, Audubon and Hawley areas which should vastly improve the ability to feed around faults when necessary and return service much more promptly. Another Substation being completed in Woodside Township will assist in enhancing service capability in the Mentor, Maple Lake, Union Lake and Erskine areas.

A major project moving forward in 2018 will be the replacement of the existing automated meter reading system known as the Turtle. The Turtle system is outdated with equipment or support no longer available after twenty years of service. Wild Rice Electric has chosen the Landis + Gyr RF Automated Meter Information (AMI) metering system as the replace-

ment. The enhanced AMI offers fast two-way communication between the meter and our office providing more data and increased service to members. The benefits include better usage data to enhance personal energy management, outage detection that will help crews respond quicker, verification of demand measures, remote disconnect and reconnect capability and addressing certain power quality issues like low or high voltage. In the upcoming months implementation of the backbone equipment will begin with full meter deployment to individual homes and businesses scheduled to begin in the spring. Allegiant Utility Services has been selected as the contractor to install approximately 19,000 meters over 12-18 months.



Annual Meeting

The cooperative's Annual Meeting is scheduled for Thursday March 22, 2018. Please mark your calendars to attend. The afternoon will begin with a meal served by Quality Catering of Ada followed by entertainment from local well known musician Eric Reitan.

A required part of the annual meeting is the business session including detailed reports on how the co-op fared at the end of 2017. Another important part is the election of directors to represent your interests. This year the terms of Larry Sollie – District 1, Mark Habedank – District 2 and Russell Okeson – District 3 expire. The Nominating Committee met at 11:00 AM on January 17, 2018 to name a slate of candidates to stand election for those positions. A formal Nominating Report is included in this issue. Please mark your calendars and plan to attend. Stay warm and safe!

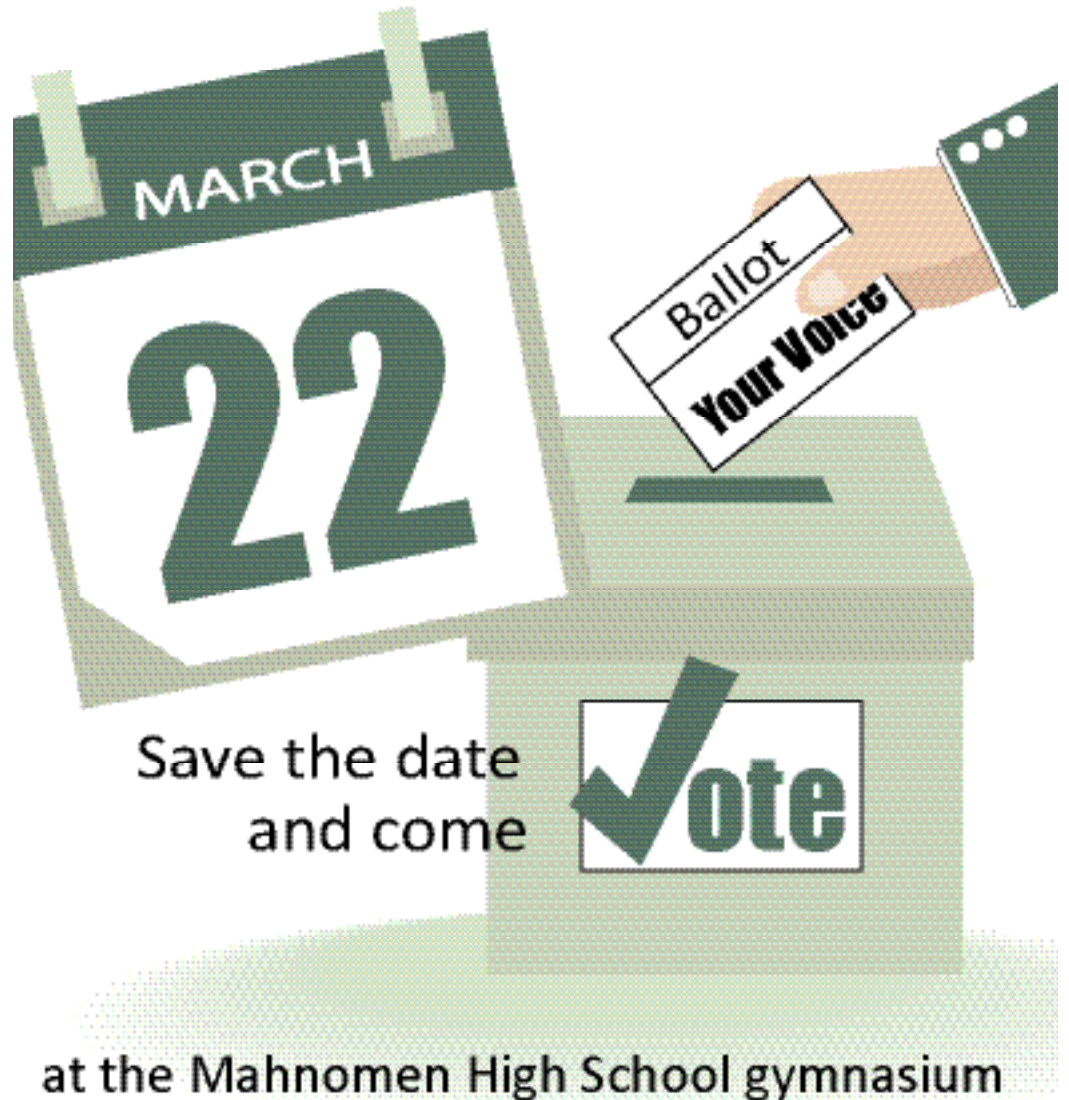
Attention: High School Juniors & Seniors!

The deadline to apply is quickly approaching for the 54th Rural Electric Cooperative Youth Tour to Washington D.C., June 9 -14 , contact Wild Rice Electric or click on the 2018 Youth Tour banner on our website at www.wildrice-electric.com for an application requirements. Applications must be submitted by March, 9th.

Make 2018 the year you experience the monuments dedicated to our country's leaders and heroes. Let your voice be heard and get your questions answered.



78th Annual Meeting of the Members



Save the date
and come



at the Mahnomen High School gymnasium

Notice of Annual Meeting

for Wild Rice Electric Cooperative, Inc. Mahnomen, Minnesota

The annual meeting of the members of Wild Rice Electric Cooperative, Inc. will be held at the Mahnomen High School gymnasium, 209 First Street SW, in the City of Mahnomen, Minnesota at 6:30 P.M. on March 22, 2018, to take action on the following matters:

1. The reports of officers, directors and committees.
2. The election of three directors of the Cooperative. One director shall be elected from each of the Cooperative's three districts for a term of three years. A member who is absent from a member's meeting may vote by mail on a ballot (an "Absentee Ballot"). Absentee Ballots are available by request. A properly executed Absentee Ballot must be received on or before 9:00 a.m. on Thursday, March 22, 2018, to be counted as the vote of the absent member at the meeting.
3. All other business which may come before the meeting and adjournment thereof.

Dated at Mahnomen, Minnesota on January 29, 2018.

**Diane Christianson, Secretary
Wild Rice Electric Cooperative, Inc.
Mahnomen, Minnesota 56557**

Proof of Mailing

STATE OF MINNESOTA
COUNTY OF MAHNOMEN

Diane Christianson, being first duly sworn, on oath, deposes and says that she is duly elected, qualified and acting Secretary of Wild Rice Electric Cooperative, Inc.; that on January 29, 2018, she caused to be mailed to each member of the Cooperative, a notice of the annual meeting of the members of the Cooperative by having the notice published in a periodical, published by and on behalf of the Cooperative which is mailed to each and every member monthly, and that the attached is a true and correct copy of said notice of said meeting as aforesaid.

**Diane Christianson, Secretary
Wild Rice Electric Cooperative, Inc.
Mahnomen, Minnesota 56557**

Ads

For Sale

Two wooden 1940s vintage first grade desks from Lincoln school in Detroit Lakes. Excellent condition. Mounted as single unit. \$100, 218-846-0845.

50 lbs #7½ lead shot, \$40. 12 ga 2¾ steel wads, six bags, 100 ct per bag, \$50. "800X" powder plus misc 550lb dial scale, still in box, \$25. Chevy pickup small block headers, \$50, 218-935-5110.

1995 Toyota Tacoma pickup, 5 speed transmission, like new topper, asking \$1,700. Older Knipco heater runs good, \$45. Lv mess 218-439-3099 or 701-306-7526.

6 cord cut/split cottonwood \$100 cord or \$600 pile. 3.5 cord poplar cut/split \$100 cord or \$350 pile. 7x8 utility trailer nice w/ ramps, \$650. Lv message 218-935-5576.

Registered Red Angus Bulls, Top bloodlines nice dispositions. Low birth weights good for heifers. Coming yearlings, \$1750, 218-841-2688.

1968 Minneapolis Moline Jet Star 3, gas, power steering, Wheatland model, \$3,450. Minneapolis Moline M5, wide front, gas 3 pt, power steering, \$3275, both run good 218-938-4346 lv message.

3 circle saw blades, snow blower walk-behind, new tires, 8hp, 28" (as is). 218-584-4603.

1 L & 1 M HJC snowmobile helmets, \$75 ea. 2 - 36" Bi-fold doors, panels 18" x 79" \$20. Light fixture, 3-5 ½ inch glass globes on a circle base, \$5. Red all leather Lakers letterman's jacket size 42. Handmade microwave bowl holders \$5, 218-847-2295.

2002 Ford Explorer 162,000 miles good car, \$2,000 obo, 218-935-5576.

1995 Polaris 440 Indy Sport, reverse, very sharp black, 6,500 miles, \$1150.00. 218-790-1175

Alfalfa or hard grass 5x5 large round bales 1st crop ea, \$35. Also 3rd crop \$50 ea. All stored in hay shed. 218-596-8383.

72" Dynastar downhill skis, Salomon bindings, Lange 10 M boots, 54" Scott poles, \$50. Antique bamboo ski poles w/ leather straps, \$30. Bear skin rug, excellent, \$200, 218-435-1255.

Almost new Ruger Single Six 22LR/22mag stainless revolver redwood grips with case. Must go through an FFL dealer for transfer. \$525, 320-287-2799 or gaylen1950@gmail.com.

Butcher hogs \$150 for whole \$100 for half delivered to Ulen Locker Feb. 12, 701-388-2747.

Bunn SRU 1.5 to 3 gal. commercial coffee maker. Filters included. Excellent shape \$600.00 (\$2200.00 new) 218-280-7836.

2005 Arctic Cat Z570 snow mobile, 1,870 miles. Extra win shield, belts, cover. 8 ½ x 10 tilt aluminum trailer w/ salt shield and tongue jack all great shape, \$3,500 obo 218-637-0293.

1983 Cadillac Sedan Deville, 4 door w/ 4.1 liter motor 96,000 actual miles, good shape. 8x6 ft flatbed w/ diamond plated bed, 4" chan frame w/ lights, \$400, 701-429-8141 lv message.

Very nice Helmut Gerhardt Viola, case & bow, \$250 or trade for guns, pay diff in cash. 701-293-1295.

Wanted

Wildlife mounts for a cabin wall - fish, deer, muskrat, otter, etc. Also wanted a cast iron wood burning stove for a small cottage. 651-764-5537.

235 75r 15 in tires, 218-584-4603.



State law for active duty military personnel

State law offers active military personnel additional payment options for their electric bills. The law covers disconnection, payment arrangements, appeal and annual notice to cooperative members. Similar to the state's Cold Weather Rule, an application must be completed and income guidelines exist. It's available for active duty military personnel, deployed or a permanent duty station change.

Our Ad Policy

- All ads must be 30 words or less.
- Ads will be abbreviated at the coop's discretion.
- No real estate or commercial ads will be accepted.
- Ads are published for members at no charge as space permits on a first-come, first served basis. Unpublished ads will not be carried over.
- Ads are due by the 10th of the month prior to publication.
- Members may submit only one ad per issue.
- Ads must be resubmitted to run an additional month.
- Ads must be typed or in clear readable print. Editor reserves the right to edit or reject any ad.
- You can submit your ad by mail, email, fax or drop off in office. Phone ads will not be accepted.

Energy Assistance Programs

Becker or Mahnomen County

Mahube Community Council
PO Box 747
Detroit Lakes, MN 56502
218-847-1385

Mahube Community Council
PO Box 76
Mahnomen, MN 56557
218-935-5022

Energy Assistance Program
3303 US Hwy 59
Waubun, MN 56589
218-473-2711

Becker County Social Services

712 MN Ave
Detroit Lakes MN 56501
218-847-5628

Mahnomen County Social Services
311 North Main
PO Box 460
Mahnomen, MN 56557

218-935-2568
E. Polk County Inter County Community Council
PO Box 189
Oklee, MN 56742

Phone: 218-796-5144 or 1-888-778-4008

Polk County Social Services
612 N Broadway, RM 302
Crookston, MN 56716
218-281-3127

Clearwater County Clearwater Social Services
PO Box X
Bagley, MN 56621
218-694-6164

W. Polk County or Norman County Tri-Valley Opportunity Council
1407 Erskine St

Crookston, MN 56716
Phone: 1-866-264-3729 or 218-281-9080

Norman County Social Services
15 2nd Ave E
Ada, MN 56510
218-784-5400
If you are a White Earth Tribal Member
White Earth Nation Financial Services
PO Box 100
Naytahwaush, MN 56566
Phone: 1-844-282-6580 or 218-935-2359

Nominating Committee Report

Mahnomen, Minnesota

January 17, 2018

The undersigned duly appointed Nominating Committee met at the Wild Rice Electric office, 502 North Main Street, Mahnomen, Minnesota on January 17, 2018, at 11:00 A.M.

David Christianson was duly nominated and elected Chairman and **Charles Puffinberger** was duly nominated and elected Secretary of the Committee. The Committee then proceeded to make nominations and respectfully submits the following report thereof, viz:

WE, the undersigned, duly appointed Committee on Nominations by the Board of Directors of Wild Rice Electric Cooperative, Inc. at a meeting duly held on January 17, 2018, hereby, respectfully nominate the following for directors in Districts 1, 2 and 3: to succeed in **District 1:** Larry Sollie (three-year term); **District 2:** Mark Habedank (three-year term); and **District 3:** Russell Okeson (three-year term); whose terms expire and whose successors will be elected at the annual meeting of said Cooperative to be held on March 22, 2018, viz:

Nominees

District 1 (3-Year Term) Dean Bursheim
Larry Sollie

District 2 (3-Year Term) Mark Habedank

District 3 (3-Year Term) Kenneth Heide
Russell Okeson

Respectfully Submitted,
District 1: David Christianson, Charles Puffinberger, Michael Weik
District 2: John Darco, Allan Haugo, Karen Lefebvre
District 3: Sigurd Severinson, Richard Zurn



The 2018 Nominating Committee

Front (left to right): Sigurd Severinson, Karen Lefebvre, Allan Haugo and Attorney Joel Larson.

Back (left to right): John Darco, Michael Weik, Charles Puffinberger, David Christianson and Richard Zurn.

Statement of Secretary with Respect to Election of Directors

At the annual meeting of the Wild Rice Electric Cooperative, Inc. to be held at Mahnomen, Minnesota, on March 22, 2018, three directors are to be elected to fill the directorships now held by Larry Sollie of Lengby, MN; Mark Habedank of Twin Valley, MN; and Russell Okeson of Detroit Lakes, MN. The following nominations have been received from the committee on nominations, viz:

District 1 Dean Bursheim
(3-Year Term) Larry Sollie

District 2 Mark Habedank
(3-Year Term)

District 3 Kenneth Heide
(3-Year Term) Russell Okeson

Also, any fifteen (15) or more members may make other nominations in writing over their signatures not less than twenty (20) days prior to the meeting and the Secretary shall post the same at the same place where the list of nominations made by the Committee is posted.

Any member who may be absent from said annual meeting may vote by mail for directors by requesting a ballot for directors from the Secretary of Wild Rice Electric Cooperative, Inc., PO Box 438, Mahnomen, MN, 56557, and by marking on the ballot, an "X" opposite the names of the number of candidates equal to the number of directors to be elected and enclosing the ballot in a sealed envelope bearing his name, addressed to the Secretary of Wild Rice Electric Cooperative, Inc., PO Box 438, Mahnomen, MN, 56557, and mailing the same in time so that it will reach the Secretary on or before, the date of the annual meeting and before the ballots for directors are collected and canvassed by the ballot inspectors.

Any provisions relating to the rights of a membership apply equally to all holders of a joint membership, specifically and without limitation: The presence at a meeting of any member constitutes the presence of all members and is a waiver of notice of the meeting, and the vote of any of those holding joint membership, separately or all, jointly constitutes one joint vote.

Dated at Mahnomen, Minnesota, January 17, 2018.

Diane Christianson, Secretary
Wild Rice Electric Cooperative, Inc.
Mahnomen, Minnesota 56557



Rural Delight (ISSN 0194 505X)

Published monthly by Wild Rice Electric Cooperative, Inc.,
P.O. Box 438, Mahanomen, MN 56557, in the interests of its members and others.
Periodical postage paid at Mahanomen and additional mailing offices. USPS 468-810.
POSTMASTER: Please send address changes, Form 3579 to:
Wild Rice Electric Cooperative, Inc.,
P.O. Box 438, Mahanomen, MN 56557-0438.
Subscription rates: Members, \$1/year; Non-members, \$2/year.
Phone: 218-935-2517.

Wild Rice Electric Co-op, Inc.

*This Institution is an equal opportunity
provider and employer.*

Phone: Serving you 24 hours a
day: 800-244-5709

Office Hours:
8:00 a.m.- 4:30 p.m.
Monday- Friday

Website:
www.wildriceelectric.com

Pay bill 24 hours/ 7 days a week:
877-885-7968

Also download the Wild Rice
Coop app for free at your App
Store of choice, to monitor us-
age, pay your bill and more.

In this issue

- Over the Manager's Desk with Steve Haaven
 - Statement of Secretary with Respect to Election of Directors
 - Nominating Committee Report
 - Notice of Annual Meeting
 - Proof of Mailing
 - Ads

Sundogs, also known as mock suns or "parhelia", are a pair of brightly colored spots, one on either side of the sun, seen on January 11 in Wild Rice Electric's service territory. Photo by Tamera Ostenaar