



RURAL DELIGHT

News from Wild Rice Electric Co-op, Inc.
PO Box 438 • Mahnomen, MN 56557
www.wildriceelectric.com

© NRECA

High school Scholarship winner, (parents) College plans

Since 2001 **Wild Rice Electric** has awarded

\$146,250
in scholarships

This year **Wild Rice Electric** awarded

20- \$750
scholarships

to students at **10**

local school districts

Scholarship
funds come
from unclaimed
capital credits

Detroit Lakes

Brayden Buchanan,
(Amy & Bill) MState/
Computer Science
Allison Bristlin,
(Brent) MState
Nursing Program

Fertile-Beltrami

Camryn Larson,
(Timothy & Kimberly)
U of M-Crookston/Agronomy
Jordan Van Den Einde,
(Amy & Scott) U of M-Crookston/
Ag Systems Management

Fosston

Madison Schacher, (Tina) Northwest
Technical College/Dental Assistant
Zachary Vig, (Kyle & Michelle)
NDSU/Electrical Engineering

Hawley

Bailey Ranstrom, (Kellie & Lyle) NDSU/Business
Administration, Marketing & Finance
Ethan Highness, (Paul & Missy)
NDSU/Mechanical Engineering

Lake Park-Audubon

Grant Pederson, (Darrel)
Concordia College/Business
Parker Weyer, (Mark Rasmussen)
Valley City State University/Health Sciences
w/focus on Dentistry

Mahnomen

Catherine Bunker, (Mike & Cindy)
NDSU, Paleontology
Nicholas Podlak, (Kevin & Theresa)
MState, HVAC

Norman County East

Isaac Habedank, (Mark & Rhoda)
Concordia College, Accounting, Business or Math
Isaac Stene, (Stacy & Kathy)
Concordia College, Accounting and Business

Ulen-Hitterdal

Tobias Bjerklie, (Carrie & Matt Jirava)
South Dakota School of Mines/
Chemical Engineering
Alexa Mortenson, (Danielle)
MState-Fergus Falls/undecided

Waubun

Deondra Jackson, (Jodi Anderson/Jeff Tibbetts)
MSU-Moorhead/Early Childhood or Social Work
Brady Swanson, (Glen & Sue)
MState-Baudette/Electrical Line Worker

Win-E-Mac

Mackenzie Fuller, (Linda Hanson & Keith Fuller)
Minnesota State University-Moorhead/Business
Sidney Tadman, (Jim & Stacy) Minnesota State
University-Moorhead/Elementary Education

Knowledge is

POWER

Congratulations to our 2018 Scholarship Winners



STAFF COMMENTS

Director of Finance & Administration

AROUND THE CO-OP . . .

by **Duane Gunderson**

I hope that all of you are having a good summer. It's June 15th when I am writing this article and summer is going by very quickly. It has been a good year weather wise for us so far. Let's hope it stays that way.



CRC Outages

Back in December, Wild Rice Electric switched to CRC (Cooperative Response Center), headquartered in Austin, Minn. with branch offices in Abilene, Texas and Dunlap, Tennessee, to handle after hour calls. CRC dispatches for many electric cooperatives across the country. They have many telephone lines going to their sites so when you report an outage, either someone will answer the call or you will get a recording if several people have already reported the same outage. Austin is our main call center but occasionally you may get routed to Texas or Tennessee if Austin is busy handling calls from other cooperatives in Minnesota.

When a large storm hits during a weekday, as many calls as possible will be handled here in the office but overflow will go to CRC. We hope this new system will help alleviate the frustration of busy signals during periods of outages.



Meter Replacement

Allegiant Utility Services continues to replace nearly twenty thousand existing meters with new metering technology. If you live north of Hwy 113 and West of Hwy 59 you may have had your meter replaced. Replacement is done by substation areas. Waukon was the first sub to get done, then Rindal and now Erskine is being done. The reason we started in the northwest part of our project area was to get all new meters installed there before we transfer some of the services from Rindal and Erskine subs to the new Woodside substation located south of Maple Lake. This transfer will take

place in the near future and should help quality of service in that area.

To date, over three thousand meters have been changed out since March and plans are to have one Allegiant crew up north and another in the southeast part of our project around the Detroit Lakes area. The whole project will cost about \$3.5 million but is needed because the old system we have has become obsolete and the manufacturer, Landis & Gyr, no longer produces or supports the old "Turtle" system. The new system is expected to last about twenty years, the same as the one we are replacing. The new system will also aid in reporting outages and supply more electrical load data.

Important to note on "off peak meters"- If you have off peak heat and you weren't home when your main meter was replaced, please set up an appointment with the Allegiant installer to get your off peak meter replaced. Allegiant leaves a door hanger with their contact information to set up an appointment. The off peak meter is key for getting the off peak rates. If you don't get the off peak meter replaced, you will no longer get credit for your heat usage.



Financial

Wild Rice Electric is off to a good year financially due to the increased kilowatt hour sales and decrease in storm damages. Through May we are under budget for expenses resulting in over budget for margins. If you will remember, it seemed like winter would never end and finally it did in April, going from frozen lakes one week to open water two weeks later.

Computer User Group Meeting

Last week I attended our annual Professional Computer System user group meeting in Denison Iowa. It's always good to get together with other cooperatives and municipals using the same computer software to exchange ideas and input on future needs. One change that will affect

all of our consumers is a new billing format planned for the future. Once this is rolled out, I think you will like the bill presentation and a graph showing previous usage. Also down the pike, outage communication will be improved for those using our phone app. If you don't have our app, I encourage you to go to the app store and type "Wild Rice Coop."

Much has been done

I find that all of the things going on at Wild Rice Electric to be exciting-the new meters, the new mapping system that has been installed, and the new after hour answering service that's in place. Other projects include the new Woodside substation, the transmission sub near Lake Park, the rebuilt Sand Hill sub south of Fosston, the blink mitigation on the transmission line serving the Sand Hill, Beaulieu and Oakland substations (all done by Minnkota Power), the tree clearing along Mahnom County Hwy 4, down south in the Detroit Lakes area and other parts of the project that needed work, the new website, the new billing format which will be forth coming in the future and all the payment options that we presently offer will all hopefully help to serve you better.

More needed

Even though we have done a lot to provide good service, we realize that the construction of our system began back in 1939 and most of it completed right after WWII. The system is old and much more work is needed to repair, replace and upgrade but unfortunately it can't all be done at once because of time and money but plans are in place to continue improvements.

Capital Credits

Capital credits earned back in 1992 totaling \$757,143 will be retired and credited to the bill you receive August 1st. Also on that bill will be your portion of the 2017 margins allocated totaling \$905,132.

Thank you for your patronage and have a great summer.

Wild Rice Electric Members will share in the **retirement of capital credits** assigned based upon patronage from **1992**.

A total retirement of

\$757,143

will be applied as a credit on the July bills of active members. Members whom no longer have an account will receive a check in the mail to the last mailing address on record.

A list of uncashed capital credits may be accessed by visiting our website at **www.wildriceelectric.com**

Notification is hereby given to the members of Wild Rice Electric Co-op, Inc for the capital credit allocations for 2017. The following formula is used to calculate your 2017 capital credit earnings: **2017 Patronage 2.90%**

Notification of allocation and retirement will also be provided at the bottom of your billing statement.

Retirements for \$5 and under will not be mailed out – they will be returned to the equity of the co-op.



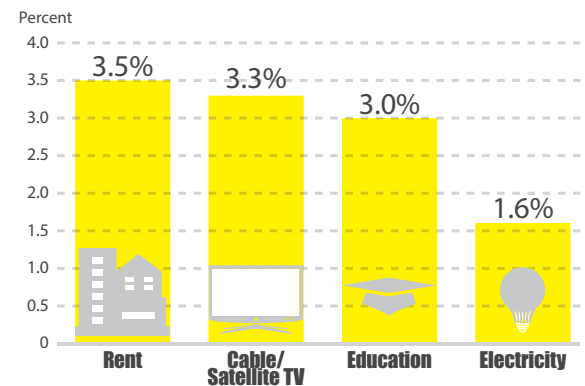
Wild Rice Electric is deploying a new Automated Metering Information (AMI) system across its service territory. Wild Rice Electric has contracted with Allegiant Utility Services to help with the upgrade. **Allegiant meter technicians** will be visiting member's properties and upgrading their meters. These technicians will be wearing white hard hats along with identification badges. Their

vehicles will have the Allegiant logo as well as the Wild Rice Electric logo displayed on them. Our new advanced meters are part of our commitment to providing our members with improved long-term reliability, enhanced member services and faster outage management. Should you have any questions, please don't hesitate to call our office at **1-800-244-5709**.

Electricity remains a good value

The cost of powering your home rises slowly compared to other common expenses. Looking at price increases over the last five years, it's easy to see electricity remains a good value.

Average Annual Price Increase 2012-2017



Sources: U.S. Bureau of Labor Statistics Consumer Price Index

Minnesota State Electrical Inspectors

Any time you or an electrician does wiring or other electrical work at your home or farm, **Minnesota state law requires a state wiring inspector to conduct a proper inspection of the work.** A rough-in inspection must be made before any wiring is covered. A final inspection is also required. For more info., visit **dli.mn.gov** and go to the electrical page.

Clearwater County
Davis Smid: 507-227-2772

Polk County
George Stage: 218-284-1083

West Clay County
Rod Schaffer: 701-235-2840

East Becker/ East Polk/ Mahnomen Counties
Terry Lane: 218-237-8467

Norman/ East Clay/ West Becker Counties
Jason Ekholm: 218-844-2542

Area Representative
Lowell Bradbury: 218-342-3345

Ads

For Sale

5 Resin lawn chairs w/ cushions, \$20. Stair climbing folding cart, \$10 all like new, 218-847-8623.

2 International Harvester "Cub Cadet" garden tractors model 125 hydro. 1 takes a little oil, the other needs a head gasket, \$300 ea or \$500 for both. Both include mowers, 218-230-5180.

16ft. Lund Mr pike, roller trailer w/ lifetime license, 40hp Johnson, 40 lb. Minnkota bow mount, live well, hummingbird electronics, splash guards, bearing buddies, ready to fish \$2,500 obo. 701-306-3809.

Tree shears, dirt buckets, grapple & hay forks other skid steer attachments, Also free standing cattle panels heavy duty made from well pipe some have swinging gates. 701-261-3574.

Troy-Bilt rototiller pd \$650, sell for \$400 like new, 218-850-4305.

2003 40 ft Breckenridge Park Model camper w/ 2 slide outs, 2 bedrooms. Master has queen bed, other has bunkbeds & table that folds down to bed. Pull out couch in living room. Large bathroom, lots of storage. Includes 32x10 deck 218-766-7710 or 218-280-3315.

2008 Kawasaki, 900 custom, 8,000 miles, liquid cooled, belt driven, fuel injection, candy lime paint, leather bags, back rest, cruise control, windshield, stainless steel twin flag mount, \$5,200, 218-849-7498.

LG room air conditioner, fits window 22"x36"x13"H, 6500 BTU, 115V, 15 amp, very good condition. \$90. Perfect Aire, dehumidifier, 50 pint, 3PAD50, 2 yrs old \$100. 701-866-9839.

Poulan Wild Thing chainsaw, \$60. Homelite Super 2 chainsaw, \$50. Weed trimmer, \$25. 218-847-9545,

12" Delta Miter saw, 10" bench table saw skill, Bosch belt sander, 2- air guns, router & more. 5 hp Rota till, 218-473-2107.

1 bale fork, int. wagon, 12' end wheel Minneapolis Moline grain drill, 215' 1/4" stainless steel cable, 218-584-5318.

Women's golf clubs, bag, hand cart; new 1/2 hp garage door opener and hanging kit (in unopened original boxes); twin bed; 2 occasional chairs (great condition). 218-483-4203.

2003 Sugar Sand Tango Jet Boat, 210HP Mercury Jet Drive Super Sport. Seats 6 - Clean & fun to drive, lots of power, trailer has lifetime license, 218-261-0460 or 218-766-2083.

1999 Pontiac Bonneville SE, 1997 Pontiac Trans Am. Alfalfa grass small sq or round hay bales. 218-866-0093 or 218-261-0971.

Homemade tractor w/ IHC power unit - 2 transmissions, 3 pt hitch. Two double hydraulic valves & pump. Has snow blower, brush shredder & dozen blades. Last few winters have split 45 cords of oak w/ this unit, all for \$500, 701-541-2812.

2 Electric copper cords #6-4 wire rubber covered 35 ft. Also #10-3 wire copper cord 55 ft. Several CH cutler hammer & QO square D double pole 230V circuit breakers 20A to 60A \$9 each. 2 -1/4 HP electric motors 1725 ROM w/ cords, \$15 ea, Give away 3 pr aluminum adjustable crutches, 218-584-5587.

1997 Mazda B2300 for parts, bad differential, \$200, 218-732-4311.

Older heavy duty metal turning lathe S. W. Putnam' Sons w/ 40" bed, 8" chuck, 88" long w/ cutting knives, belt driven w/ motor, \$700 or offer, 218-435-6820.

Slide in, fold down pickup camper 8ft box, excellent, always shedded when not in use. "Texan" model don't know year. Refrigerator is 3 way (12V electric. 110 electric or LP gas) all in good shape, \$2,600, 218-230-5180.

3/4 ton Chevy pickup box trailer, good tires w/ spare, \$275. Parts from a John Deere field cultivator w/ lift, 218-431-0442.

1968 14ft Crestliner with trailer \$600, 1977 12 ft Lund \$300, 6hp Johnson \$550. Steel boat lift \$200. 218-563-2194.

Prepaid cell phone with charger. Has \$100 of minutes on it. Asking \$50, 218-457-3000.

444 International Tractor and 1680 Combine, 218-261-0858.

2470 Case 4/4 180 HP. 1991 Bonneville and 89 Celebrity \$575 ea or OBO. 32 1/2 JD cult, 35' drag, 25' chisel plow, 2 -6 bottom plows, 52 Int grain truck. 88 250 Ford 4x4. 20' JD Cultivator, 24' JD Drill. Gravity wagons. Packer. Drill Fill, WD Allis. 503 combine. 4- 24.5 34" tires. 218-938-4238.

A.R.E. fiberglass topper fits 2009 to 2014 Ford super cab 6.5 foot box, 218-849-4222.

2006 Holiday Ramble Savoy SL, 5th wheel camper 27 ft, 2 slide outs, kitchen, dining/living rooms, ducted heat & air conditioning. 2-way refrigerator, new tires, 4,000 miles, 5th wheel hitch include, \$13,000. 218-847-8892.

A-C loader for WD-45 Allis -Chalmers hydraulic. 18.4 -34 rear tractor tire 1/2 tread. 218-847-9703.

Oak coffee table w/ glass insert & bottom shelf, \$75. Cherrywood sofa table w/ 1 drawer, \$150. Stainless steel vintage playground slide, make offer. Pack n Play, \$40. Bouncy chair/ massager, \$15. Swing for swing set, \$18. Lg swim ring, \$12. Body glove wet suit, \$15. Harley Davidson 5T hoodie, \$17. Leather jacket 4T, \$10. Old Navy jacket 4T, \$5. 218-532-7359.

108" x 120" Electric Aluminum Boat Lift. White Canopy in excellent condition. Holds up to 5,000 pounds. Can convert to pontoon lift. \$3,000 OBO. Exterior Vinyl Shutters/Raised Panel - 10 total sets, color brown-needs paint, sizes - 4 sets at 75", 3 sets @ 43" and 3 sets @ 82". Make an offer. 218-574-2106

To Give Away

A small Sony television set, 218-439-6073.

Wanted

Accordion button or piano is ok, pay cash, 701-293-1295.

2 Int 55 Chisel plow shanks and 2 grain augers 218-938-4238.

Our Ad Policy

- All ads must be 30 words or less.
- Ads will be abbreviated at the coop's discretion.
- No real estate or commercial ads will be accepted.
- Ads are published for members at no charge as space permits on a first-come, first served basis. Unpublished ads will not be carried over.
- Ads are due by the 10th of the month prior to publication.
- Members may submit only one ad per issue.
- Ads must be resubmitted to run an additional month.
- Ads must be typed or in clear readable print. Editor reserves the right to edit or reject any ad.
- You can submit your ad by mail, email, fax or drop off in office. Phone ads will not be accepted.
- Fax ads to . . . 218-935-2519
- Email ads to . . . info@wildriceelectric.com
- Mail ads to . . . Wild Rice Electric P.O. Box 438 Mahnomon, MN 56557

**If it's not INSULATED,
neither are YOU.**

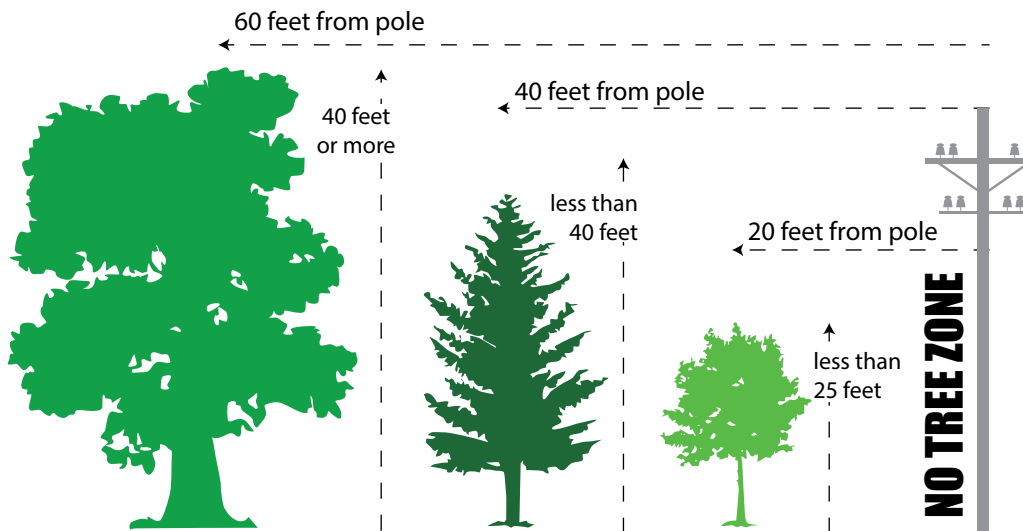
REPLACE, NEVER REPAIR DAMAGED EXTENSION CORDS.

Helping members use electricity safely, that's the power of your co-op membership. Learn more from the experts more from the experts themselves at

TogetherWeSave.com



Right-of-way clearing



Right-of-way corridor for an electric line is a strip of land that an electric utility uses to construct, maintain, repair or replace an overhead or underground power line. The corridor allows the utility to provide clearance from trees, buildings and other structures that could interfere with the line installation, maintenance and operation. Wild Rice Electric Cooperative requires a 20 foot clearance on each side of the poles for single phase lines and a total of 14 feet of cleared right of way for underground line.

Hazard Recognition

Wild Rice Electric requests that any unsafe or hazardous conditions seen on our lines be reported by calling 218-935-2517 or 1-800-244-5709 or by completing and sending in this form to Wild Rice Electric, PO Box 438, Mahnomen MN 56557. Thank you for helping us keep safety first.

Date _____

Location/Address _____

Problem _____

Your name _____

Phone # _____

Did you Know?

NOT everything gets marked when you call

Homeowners need to remember that every digging job first requires a call to **811** at least two business days before digging to get utility lines marked - even small projects like planting trees and shrubs.

Don't forget

After calling 811, wait 48 hours (excluding weekends and holidays) before you begin your excavation.

Underground power lines from the main meter inward, also known as secondary wires, however, are the responsibility of the member.



Respect the marks

Once the utilities have been located, you'll see a variety of paint markings or flags on the ground. Never use mechanized digging tools when you are digging within 24 inches of the markings.

- Electric
- Gas, Oil, Propane
- Phone, Cable
- Water
- Sewer



Rural Delight (ISSN 0194 505X)

Published monthly by Wild Rice Electric Cooperative, Inc.,
P.O. Box 438, Mahanomen, MN 56557, in the interests of its members and others.
Periodical postage paid at Mahanomen and additional mailing offices. USPS 468-810.
POSTMASTER: Please send address changes, Form 3579 to:
Wild Rice Electric Cooperative, Inc.,
P.O. Box 438, Mahanomen, MN 56557-0438.
Subscription rates: Members, \$1/year; Non-members, \$2/year.
Phone: 218-935-2517.



**Wild Rice Electric
Co-op, Inc.**

*This Institution is an equal opportunity
provider and employer.*

Phone: Serving you 24 hours
a day: 800-244-5709

Office Hours:
8:00 a.m.- 4:30 p.m.
Monday- Friday

Website:
www.wildriceelectric.com

**Pay bill 24 hours / 7 days
a week:** 877-885-7968

Also download the Wild Rice Coop
app for free at your App Store
of choice, to monitor usage,
pay your bill and more.

Directors:
Gary Bergan, Mark Habedank,
Jim Kaiser, Greg LaVoy, Jeff
Nornes, Russ Okeson, Larry Sollie
and Roger Winter.

Wild Rice Electric will be closed on **July 4th** in celebration
of **Independence Day**. Have a fun and safe holiday.